

TECHNOLOGY TOOLS

**SETUP
GUIDE &
TIPS**

**COPYRIGHT
& CREDITS**

**MORE
ACTIVITIES**

QUICK START GUIDE

To get started, open this activity in your .pdf viewer. If you are not sure which viewer you typically use, double click on the file to open it using the default viewer.

If nothing defaults, open it by dragging it into a Chrome Internet Browsing Window.

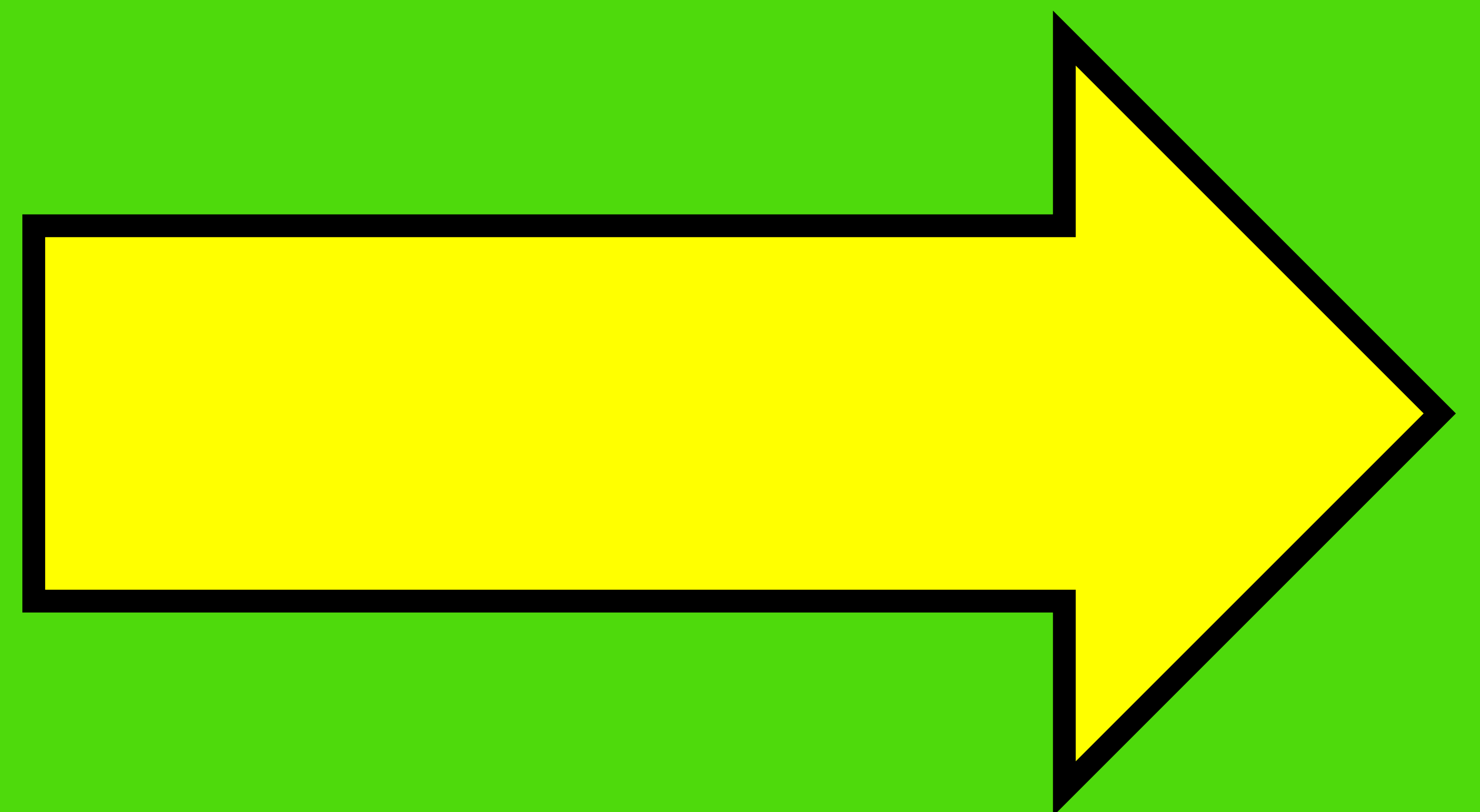
View this .PDF full page for the best experience.

Visit SETUP for more.

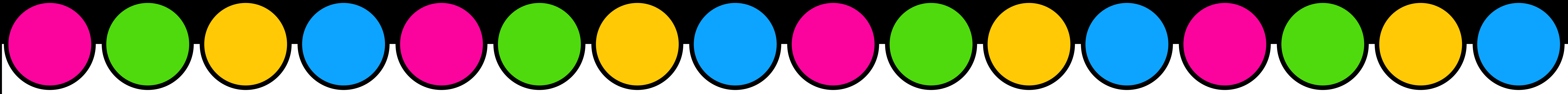
To get back to this page,
Touch the HOME icon →



START



SETUP GUIDE & TIPS



INTERACTIVE PDF

On a **COMPUTER** or **SMARTBOARD**

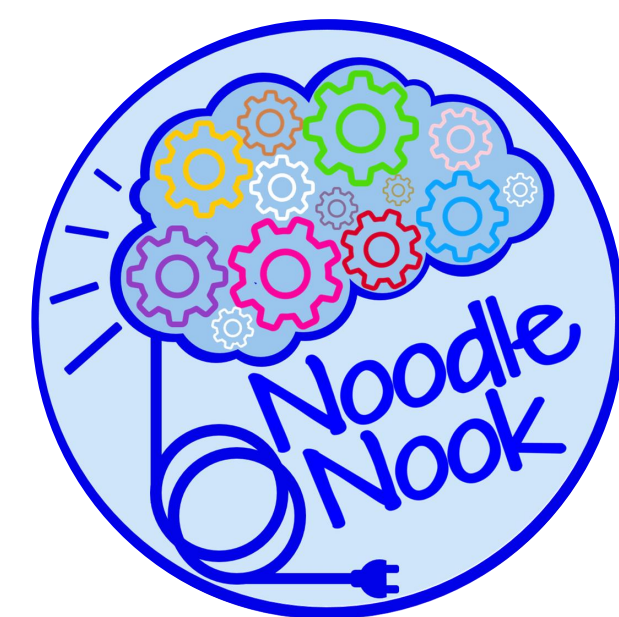
1. Download the PDF to your computer.
2. Open the PDF in your preferred reader, like Adobe Reader or in a Google Chrome window.
3. View in "FULL SCREEN" or "PRESENTATION MODE"
4. Click the **START** button!

On an **iPad** or **iPhone**

1. Download the PDF to your computer.
2. Email the PDF to yourself.
3. Open the email and save the PDF to iBooks (or another PDF reader of your choice).
4. Open the PDF in iBooks
5. Click the **START** button!

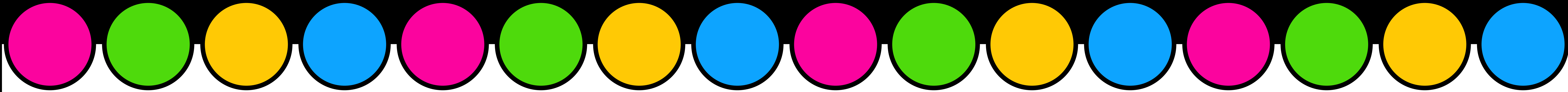
NO PREP - CLICK & GO!

This product can be loaded to Google™ Classroom or used on student devices. This activity is self-checking. A student cannot advance until the correct answer is selected.



www.NoodleNook.Net

TERMS of USE



This product is copyrighted by Ayodele Jones © 2020.

It is designed for single classroom use only. Please feel free to direct those who would like a copy to my online store. The graphics contained in this item are copyrighted and property of the artist, Ayodele Jones or used with commercial permission by Freepik from www.flaticon.com

What You Can Do

Print and use in your own classroom.

Send home a copy with your own students' parents for home use.

Refer friends to my blog or digital store where you downloaded it so they can buy/download their own copy.

Post a link back to the original download site on a wiki or blog.

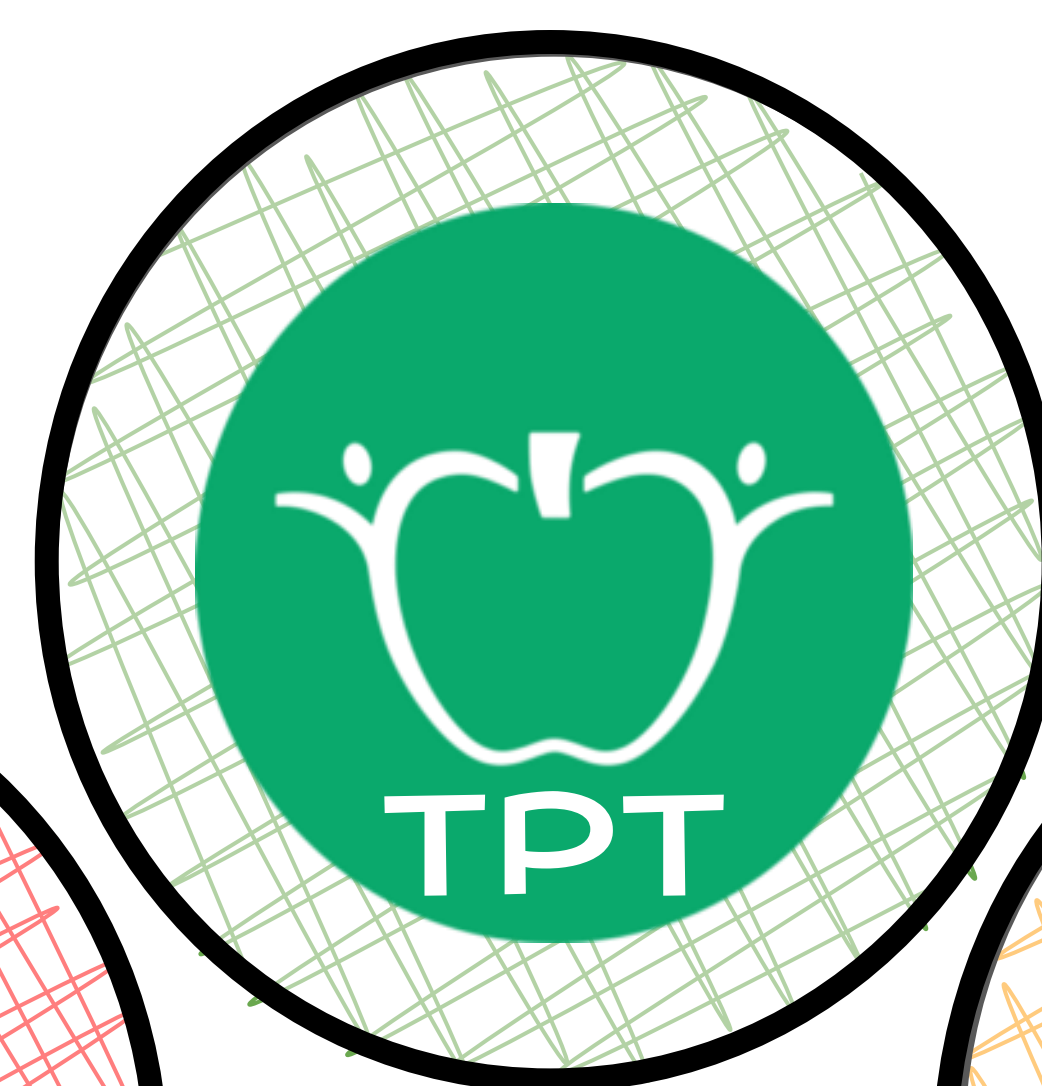
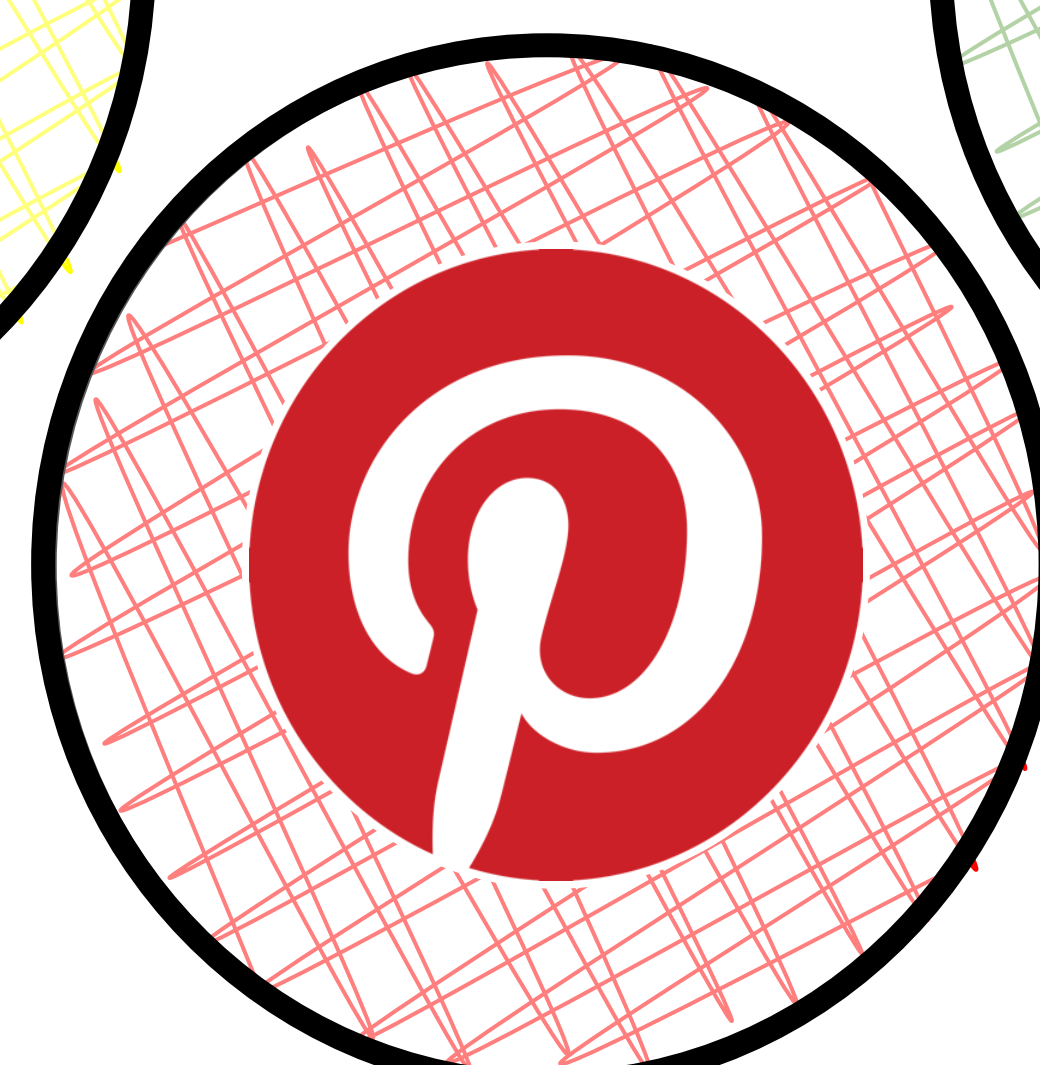
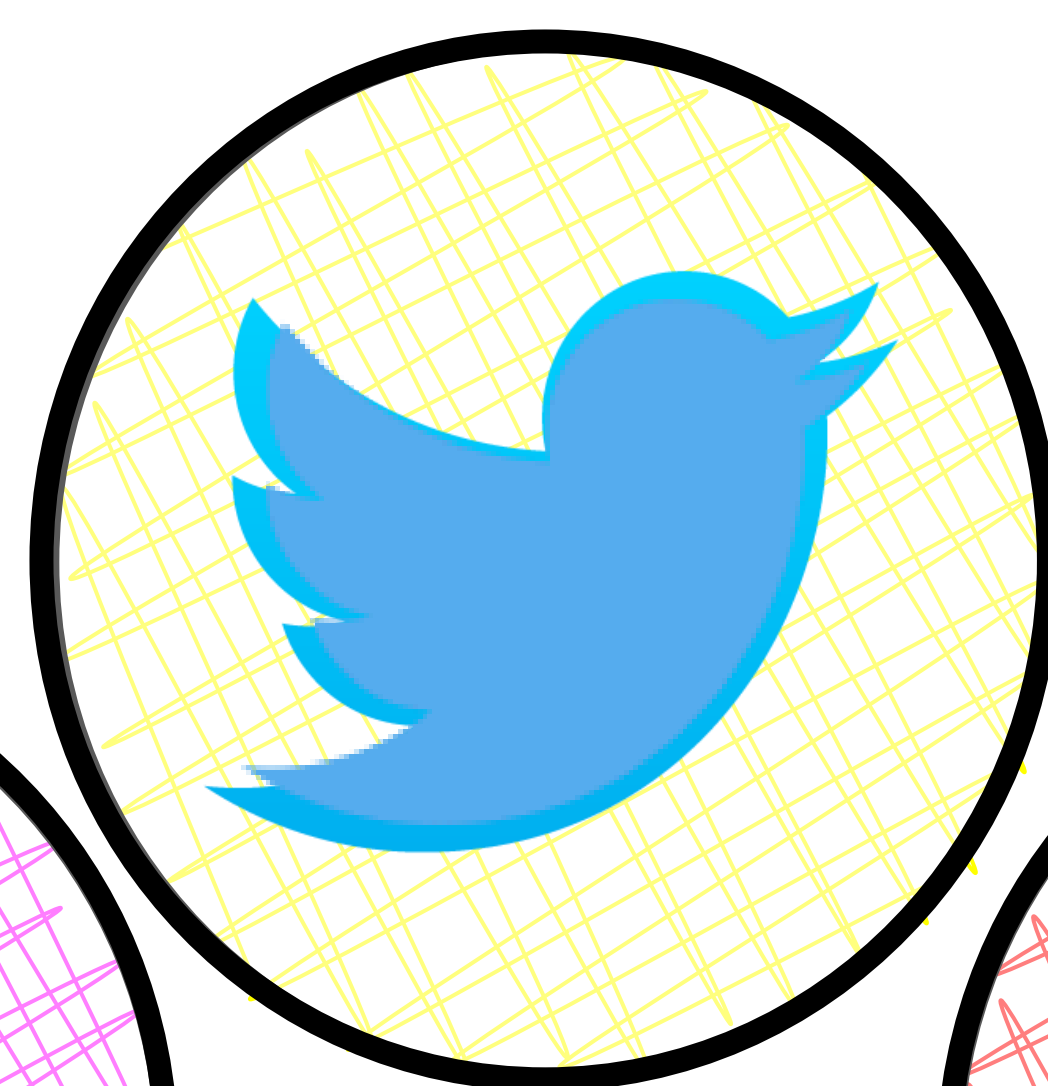
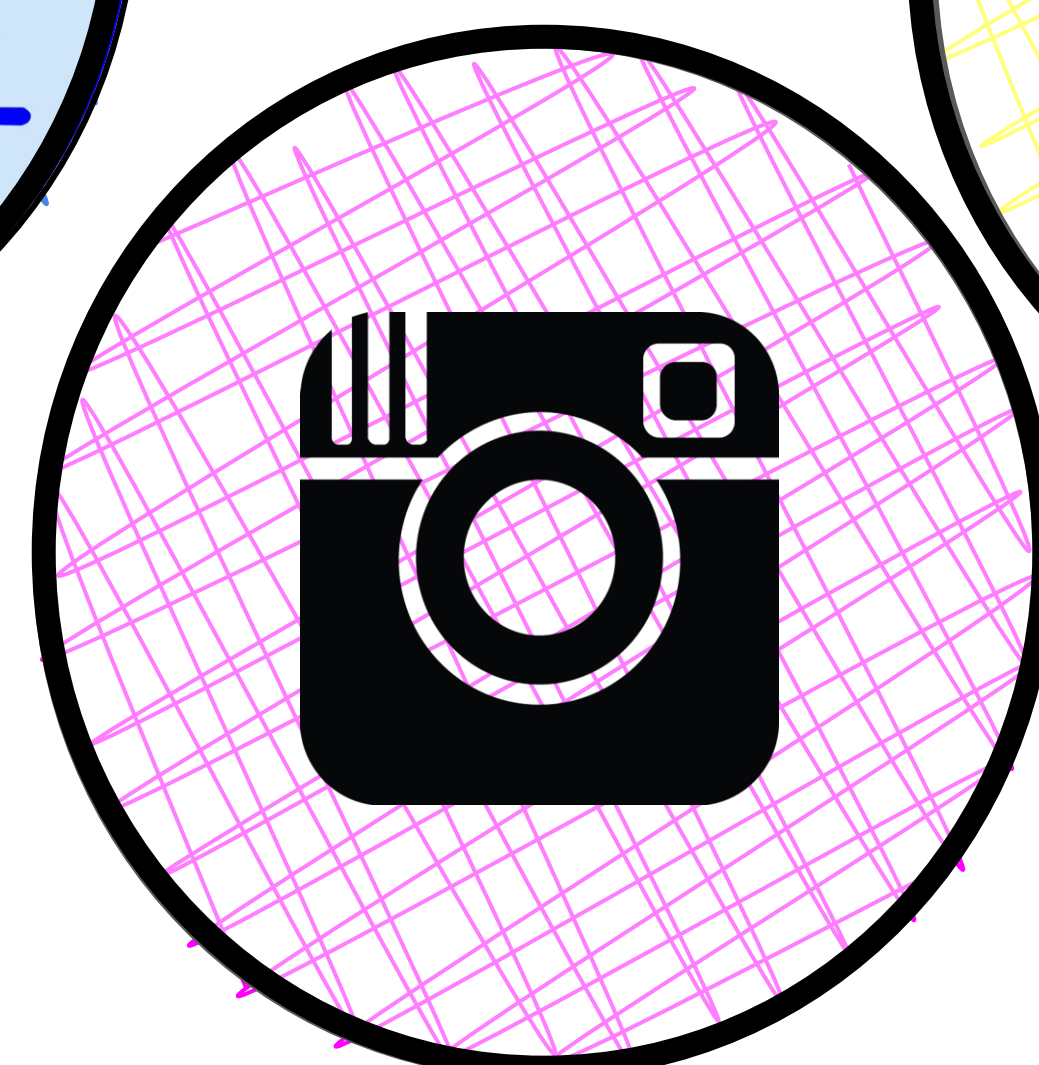
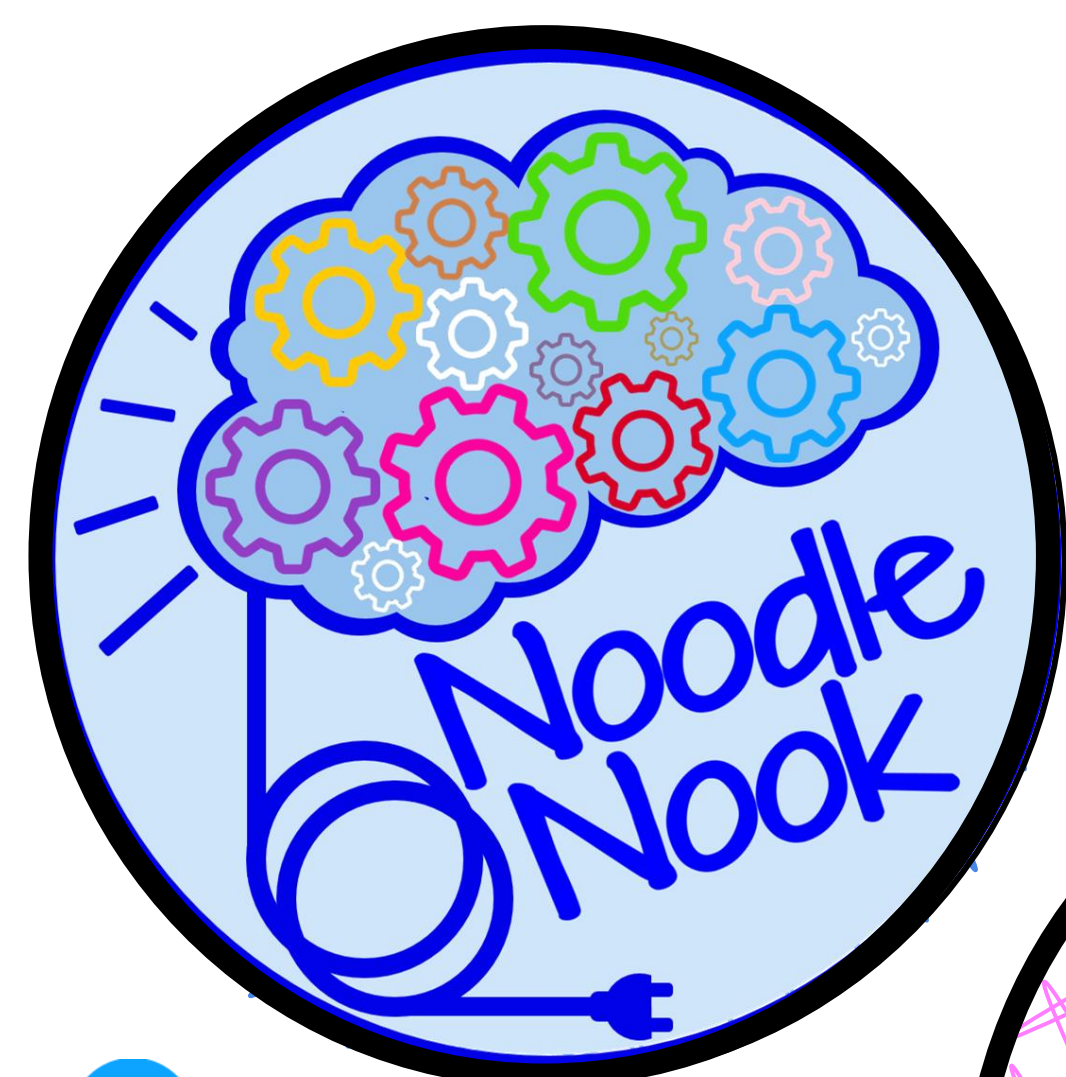
What You Can't Do

Copy, email it, or share it with others without permission.

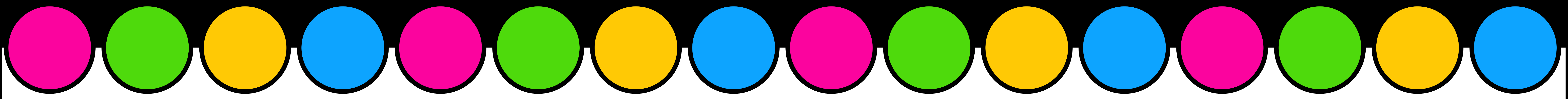
Post it electronically on a website, wiki, or blog without my permission, even with a link back to the original.

Claim this product or anything it contains as your own work.

Use any pictures or clip art from this product without permission outside of your own classroom.



THANK YOU!



Thank you for choosing this interactive resource. If you have any questions or suggestions, please contact me at ajones@noodlenook.net

Using this resource in your classroom?
I'd love to see it in action!
Be sure to tag me @TheNoodleNook

MONSTER MATH NUMERACY UNIT

for Google™ Drive

DIGITAL DRAG & DROP ACTIVITY
No Print-No Prep = ALL DIGITAL

WORK TASK BOXES

DIGITAL For GOOGLE™ DRIVE

FILL ORDERS at BRICK SHOPPE

IS THIS ORDER RIGHT?

Order Card

2	4867
9	6169
2	6167
8	6197
2	4869

YES NO

MORE ADAPTED ACTIVITIES...

FOLLOW ME →



WORK TASK BOXES

DIGITAL via GOOGLE™ DRIVE

FILL ORDERS for the DENTIST

WHICH ORDER IS THIS?

Order Card

2	1
1	4
3	2
5	2
3	5

DIGITAL for GOOGLE™ DRIVE

WORK TASK BOXES

IS THIS ORDER RIGHT?

Order Card

6	2	9	8	3
---	---	---	---	---

YES NO

ORDER FULFILLMENT at the PET SHOP

DIGITAL TASK CARDS for GOOGLE™ DRIVE

TRAFFIC SIGNS

Is this a SCHOOL CROSSING sign?

YES NO

Is this a HANDICAPPED PARKING sign?

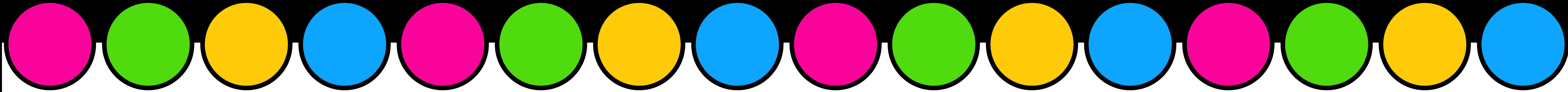
YES NO

Is this a STOP sign?

YES NO

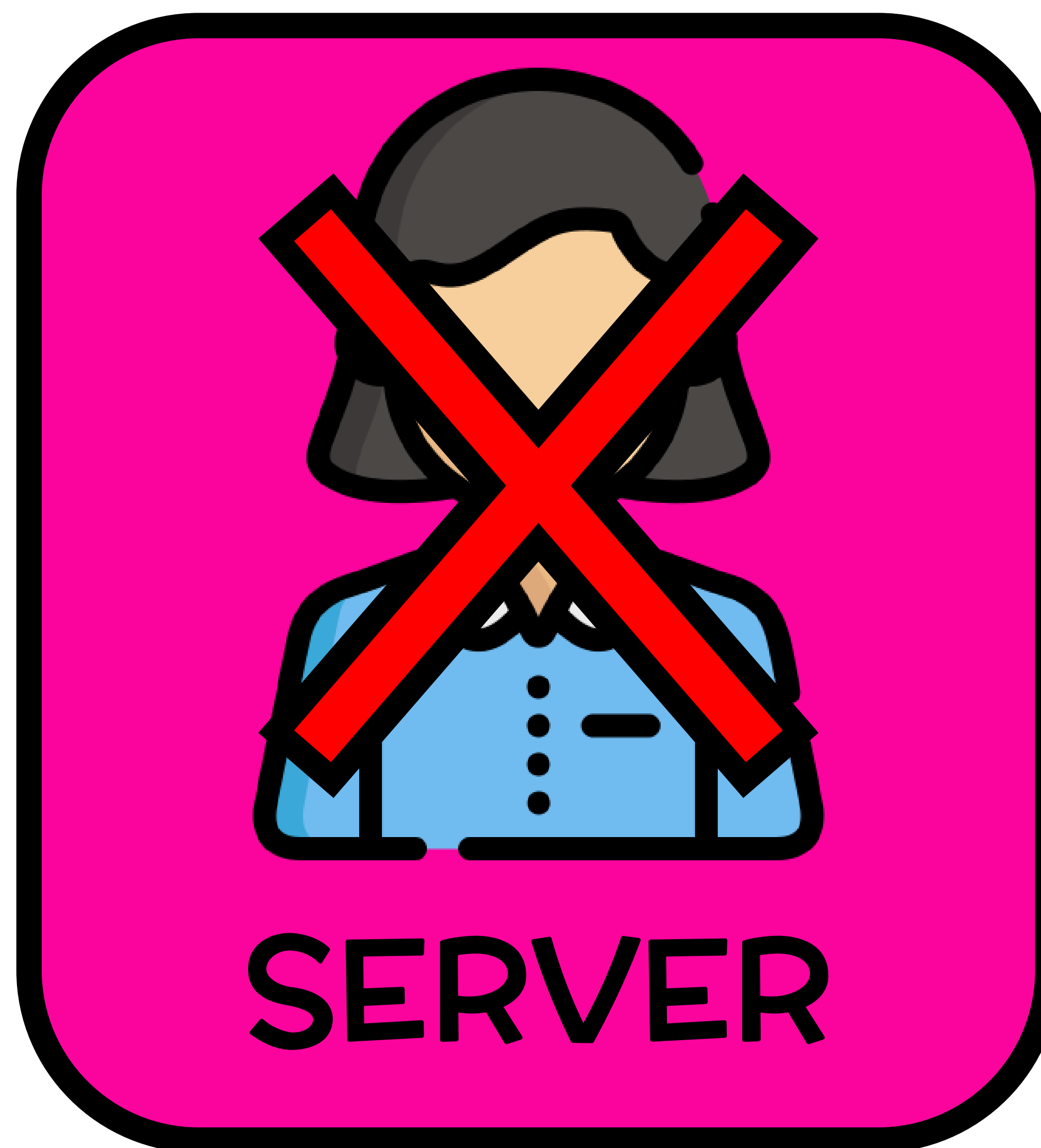
DIGITAL INTERACTIVE PLUS Printable TASK CARDS too!

OCCUPATIONS



www.NoodleNook.Net

All Occupations Available in the Full Version



CHEF



This is a chef.

A chef is a person who is trained to prepare food. The chef is a cook in charge of a kitchen.

A chef can work in a restaurant or cafe. They may work in a hotel or on a cruise ship.

I asked the chef for his recipe, but he said it was a secret.

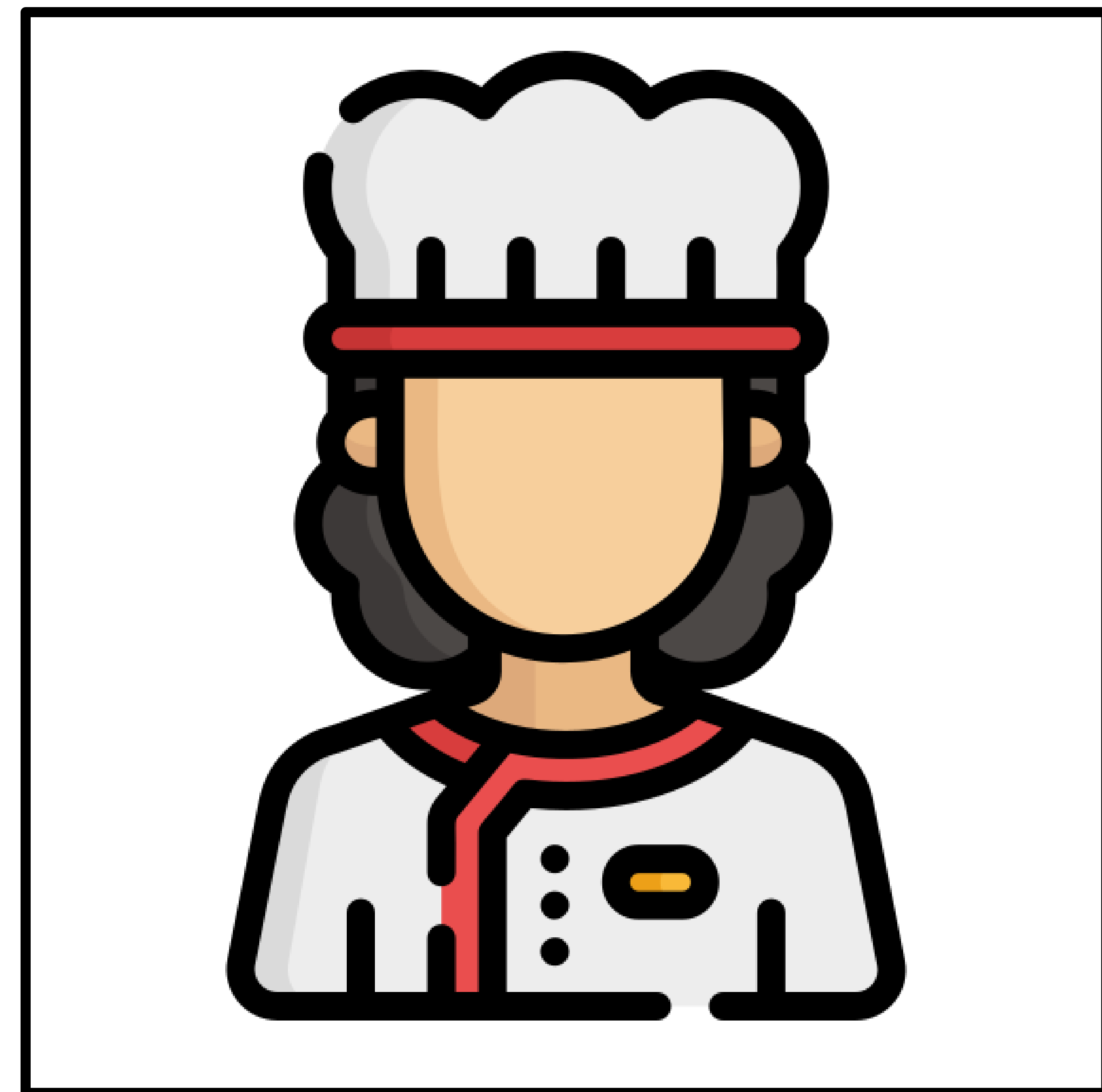
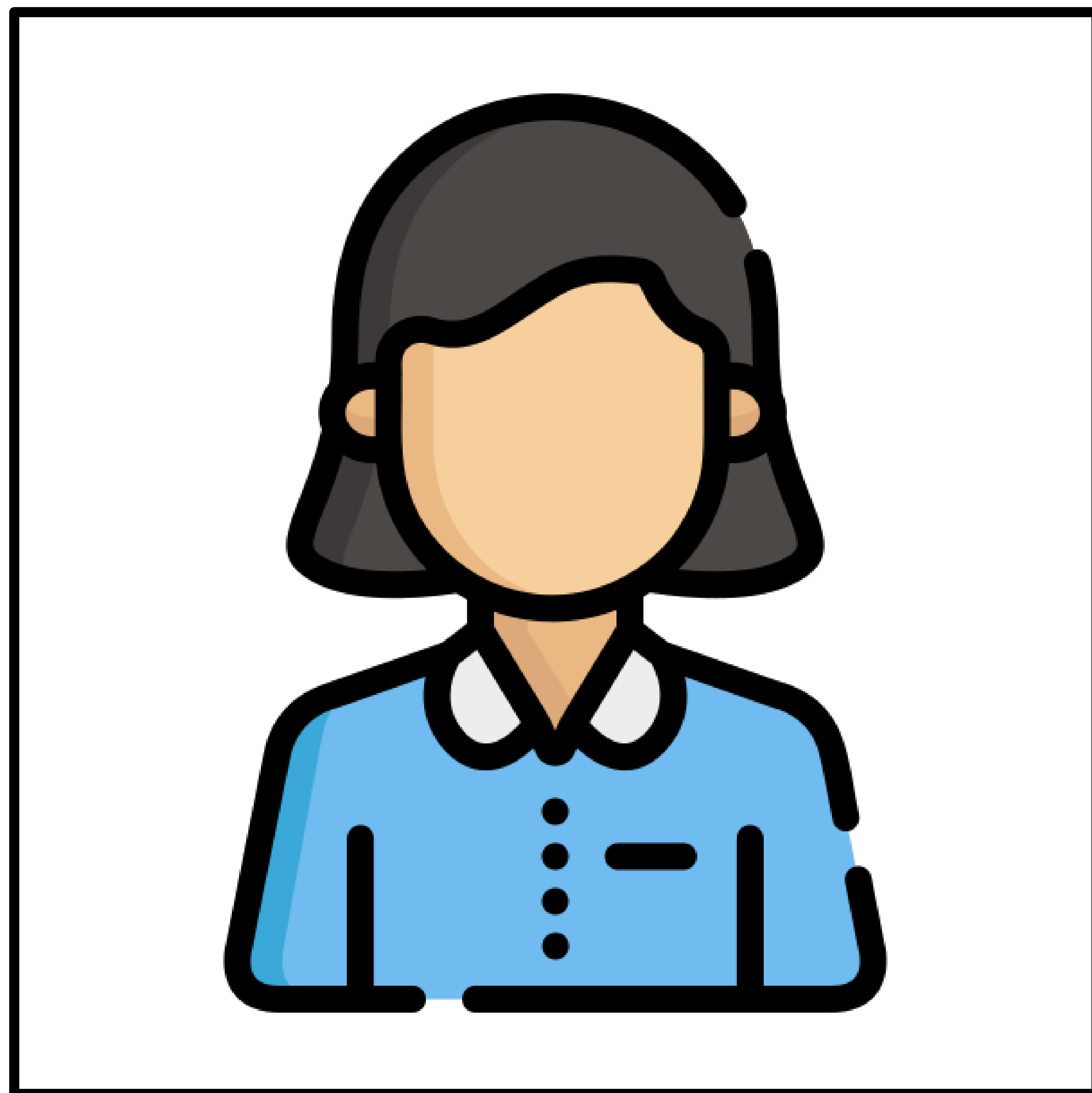
BACK

NEXT

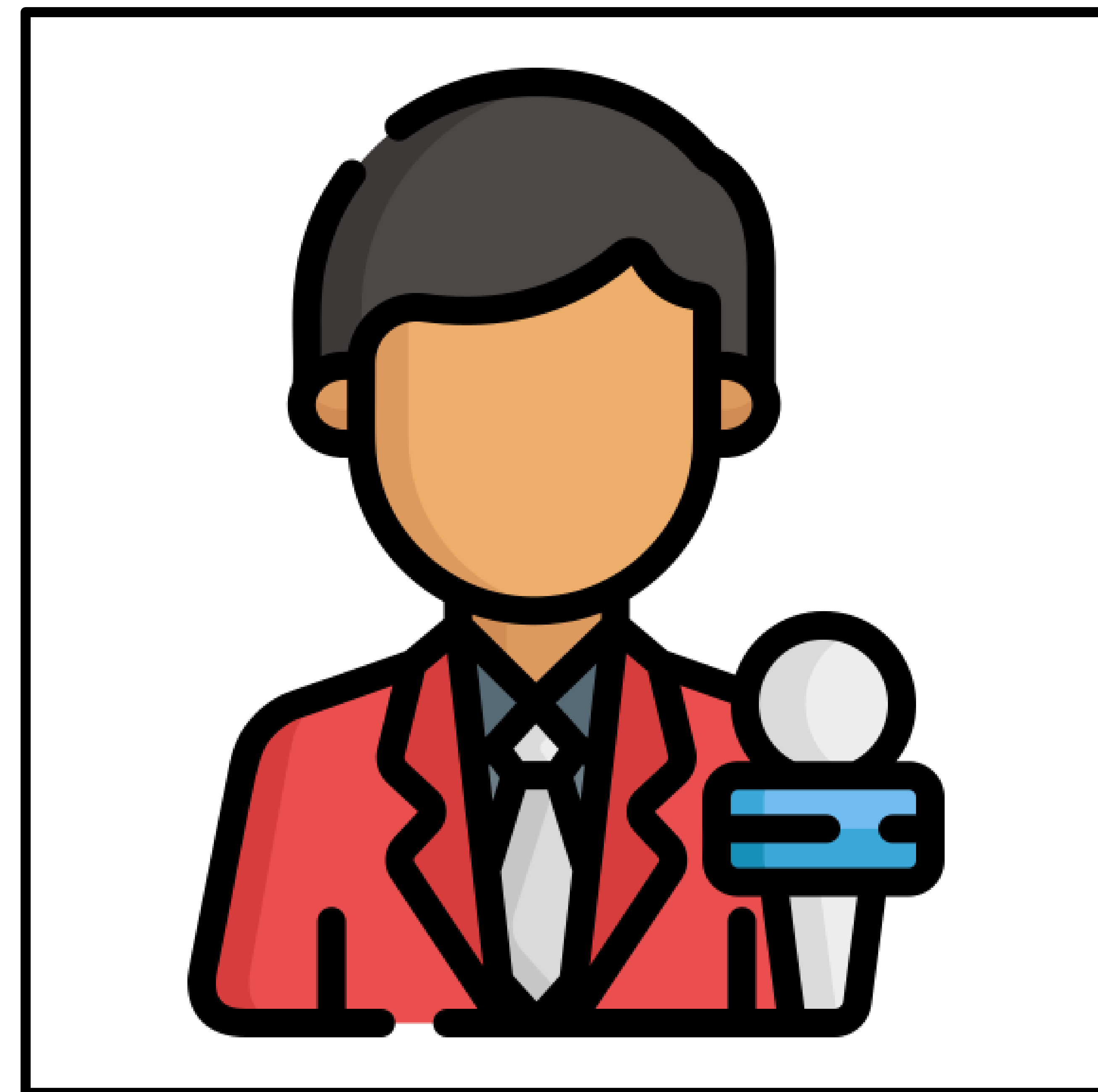
Touch the



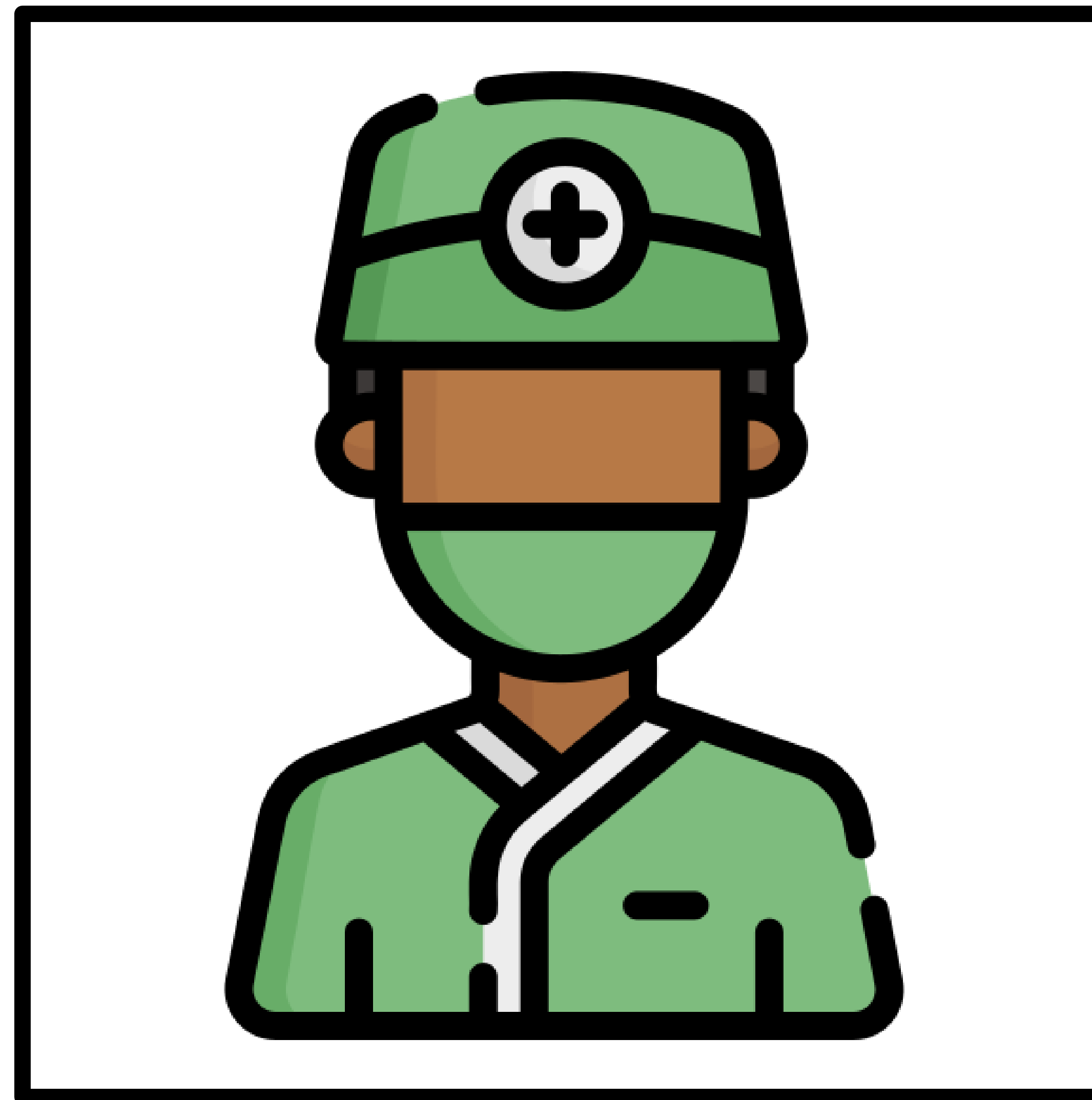
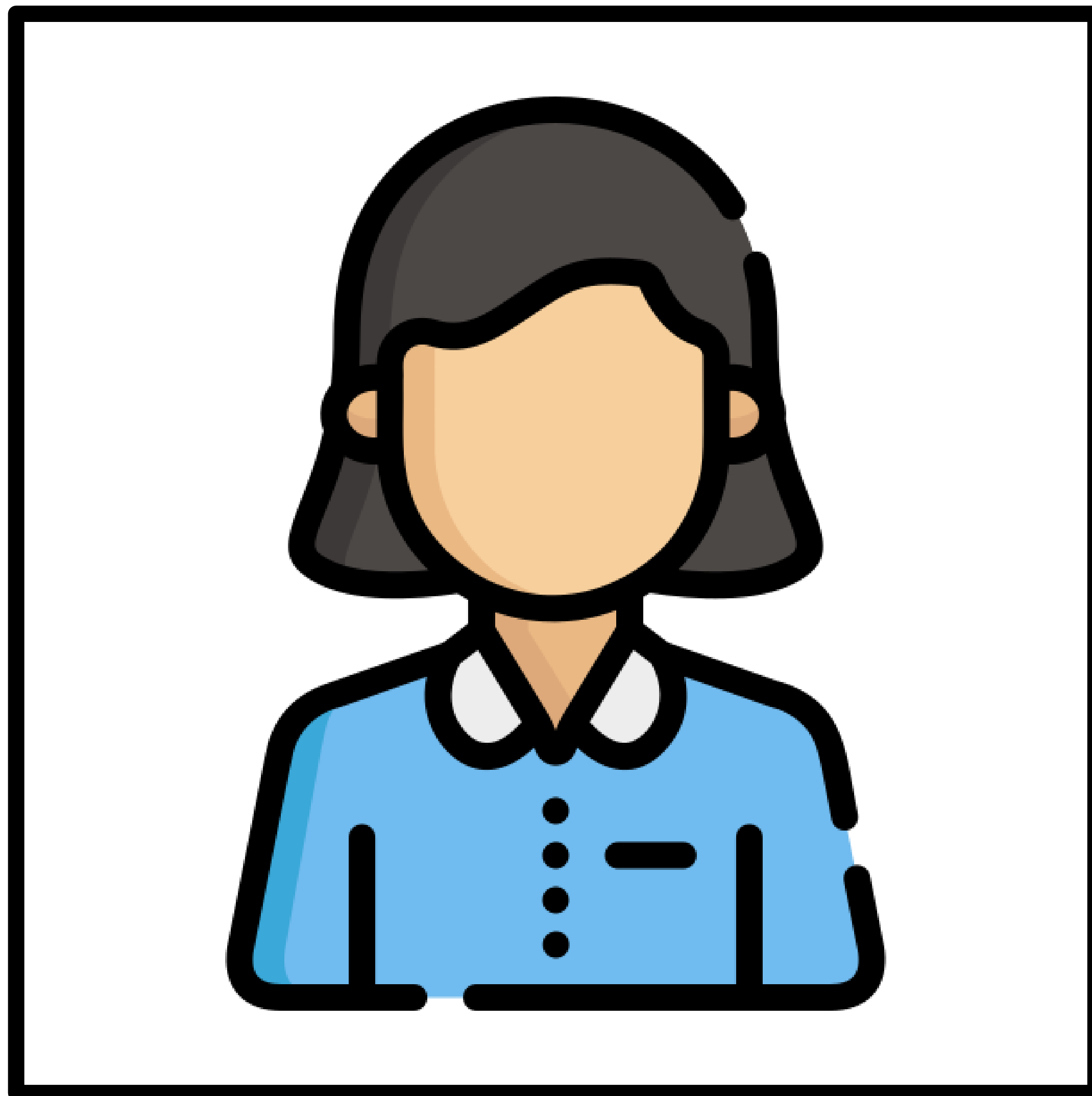
Where is the



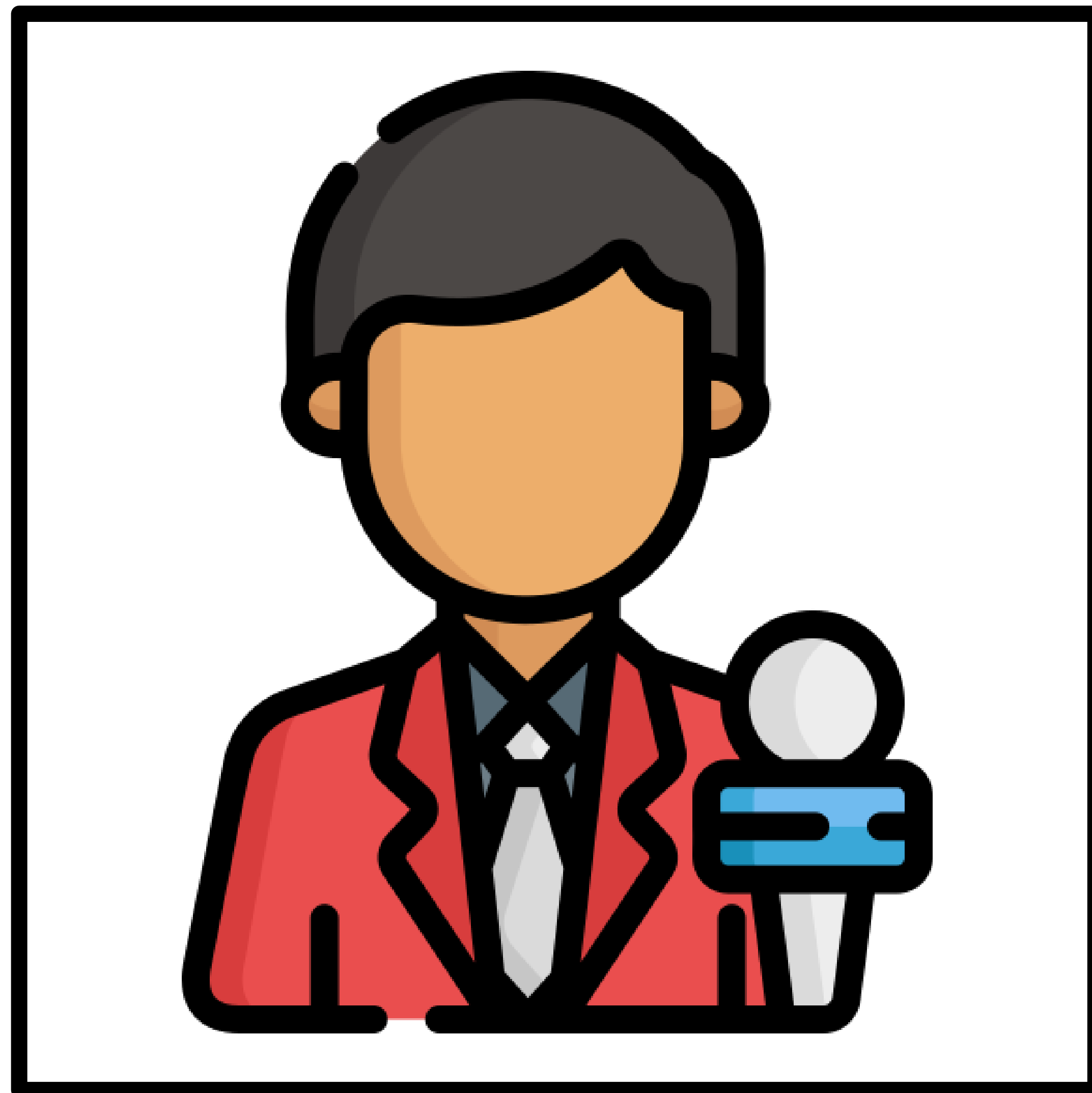
Where is the



Where is the



Where is the



Find the chef



Let's spell

chef

C



Let's spell

chef

c

h



Let's spell

chef

c

h

e



Let's spell chef

c	h	e	f
---	---	---	---



How do you spell



?

chef

chief

cfelh

?

HINT



What is this?



server

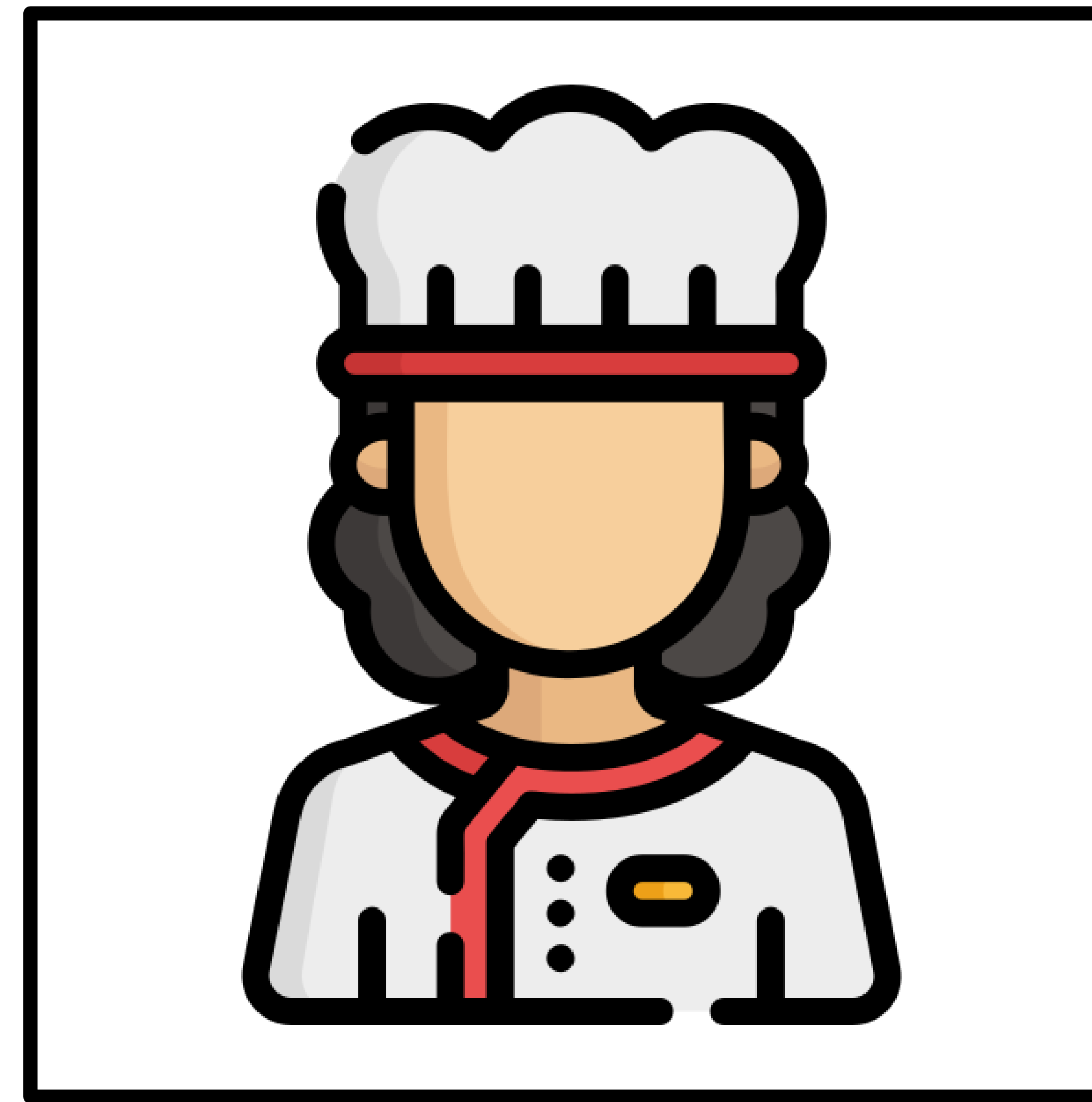
chef

nurse

reporter



Classify a



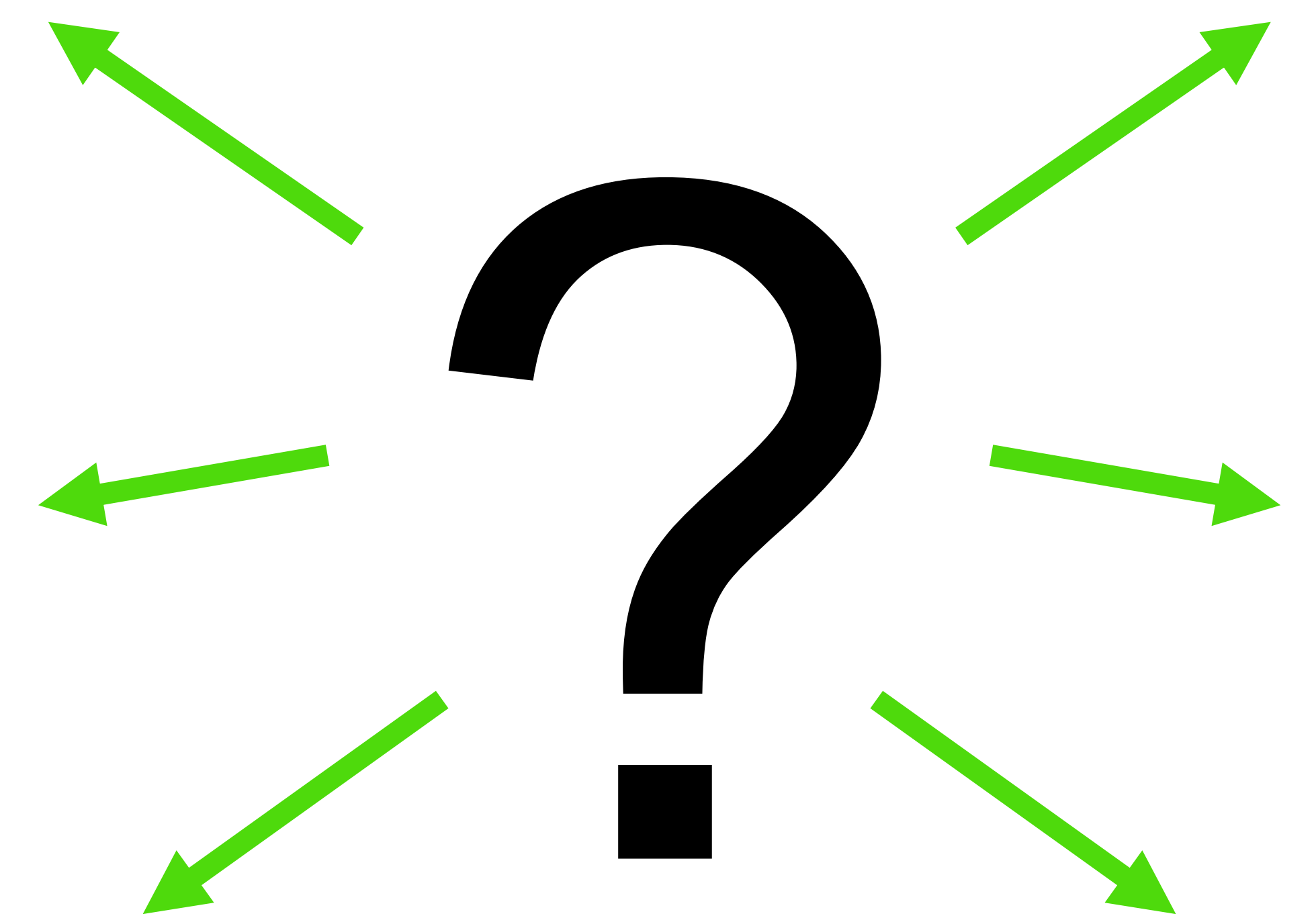
WHO



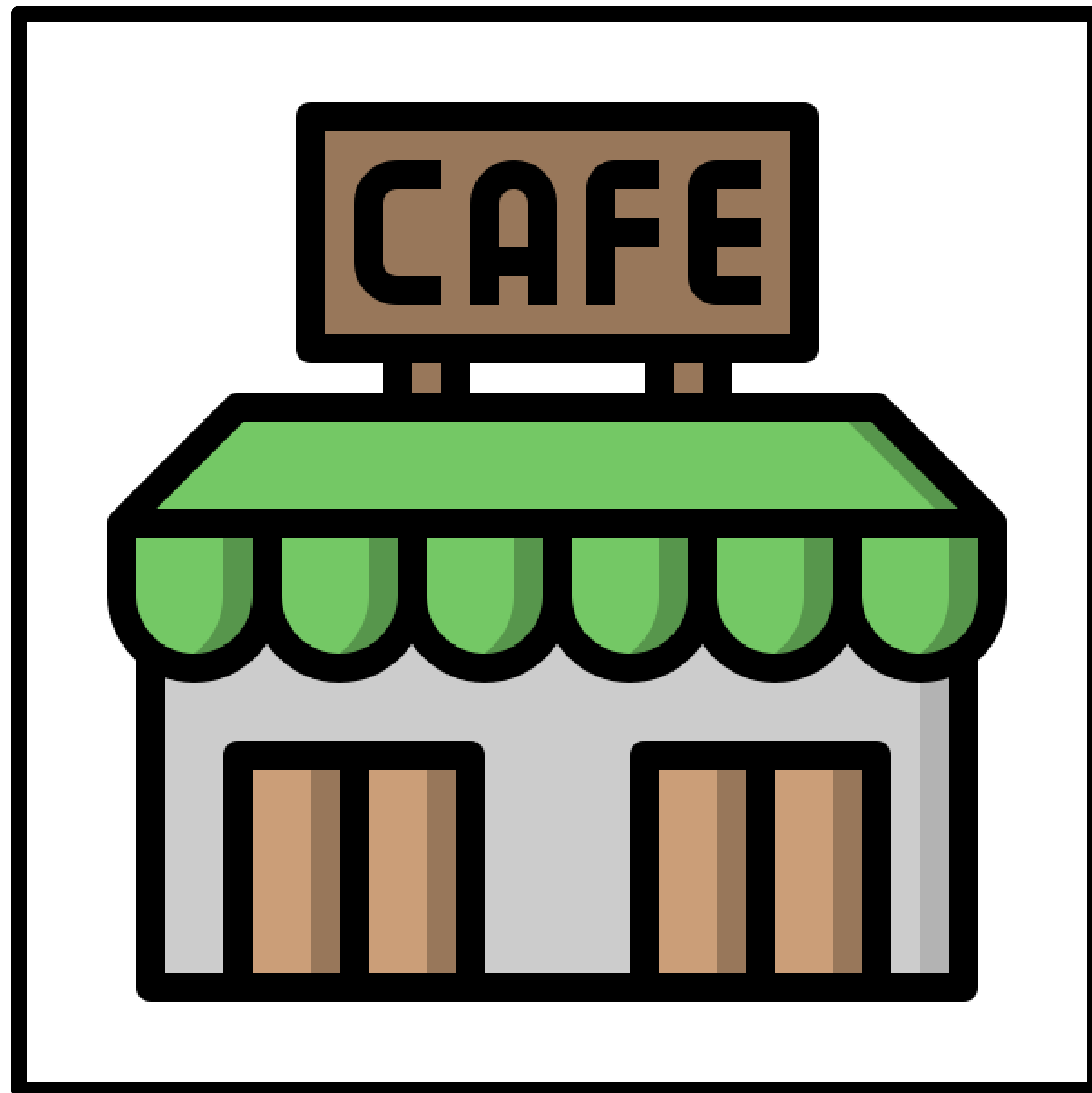
WHAT



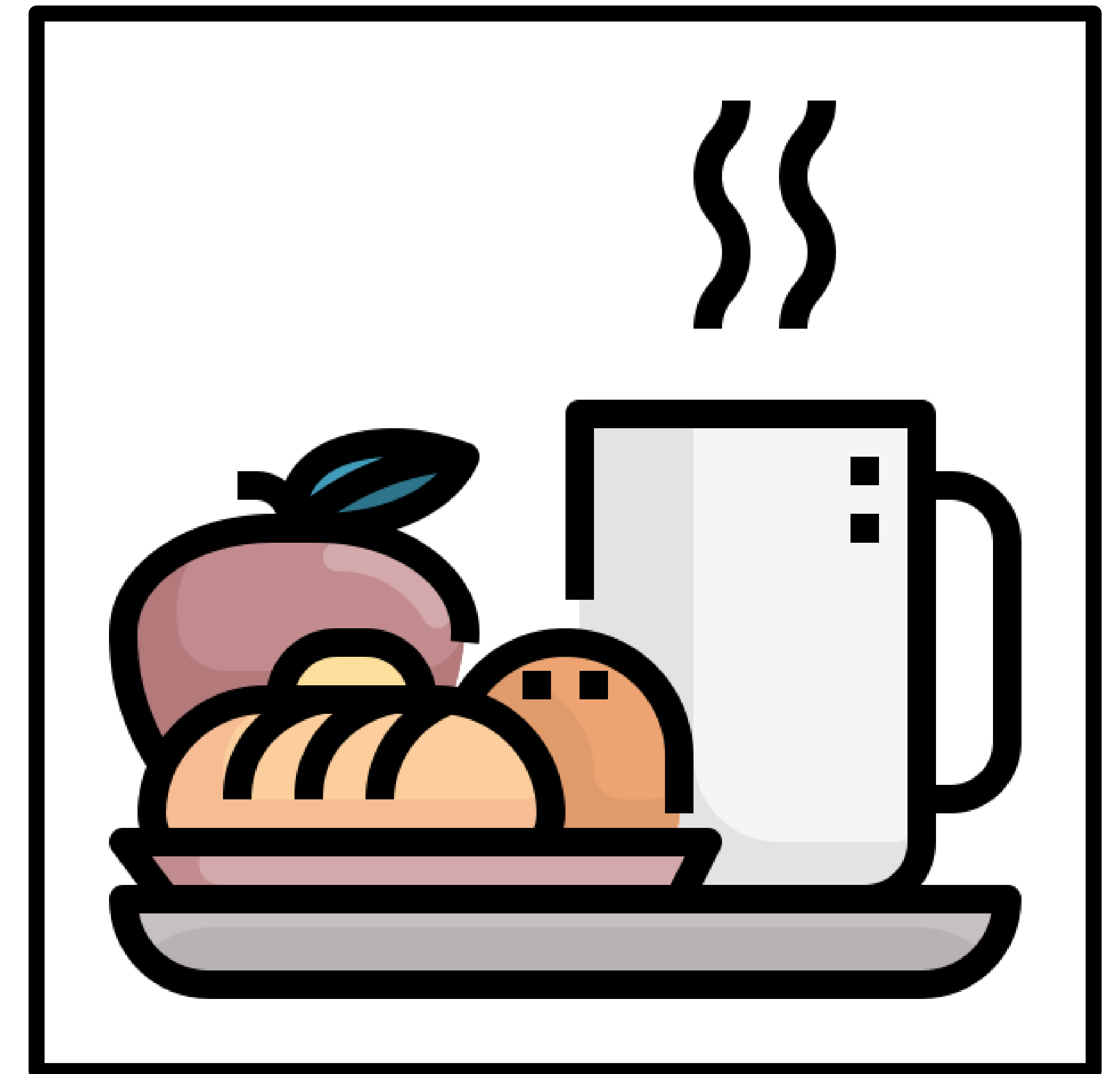
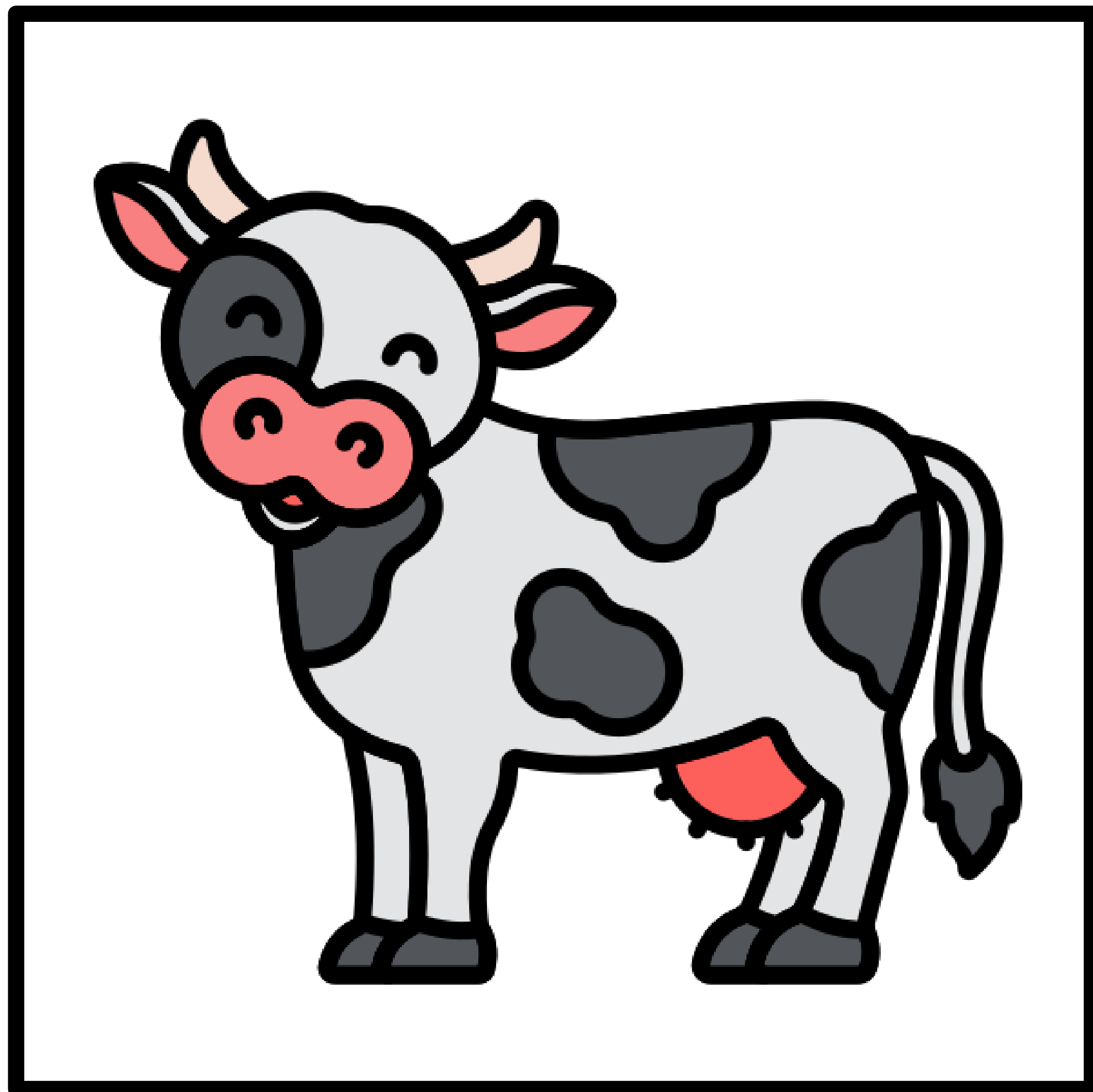
WHERE



Where do you see a



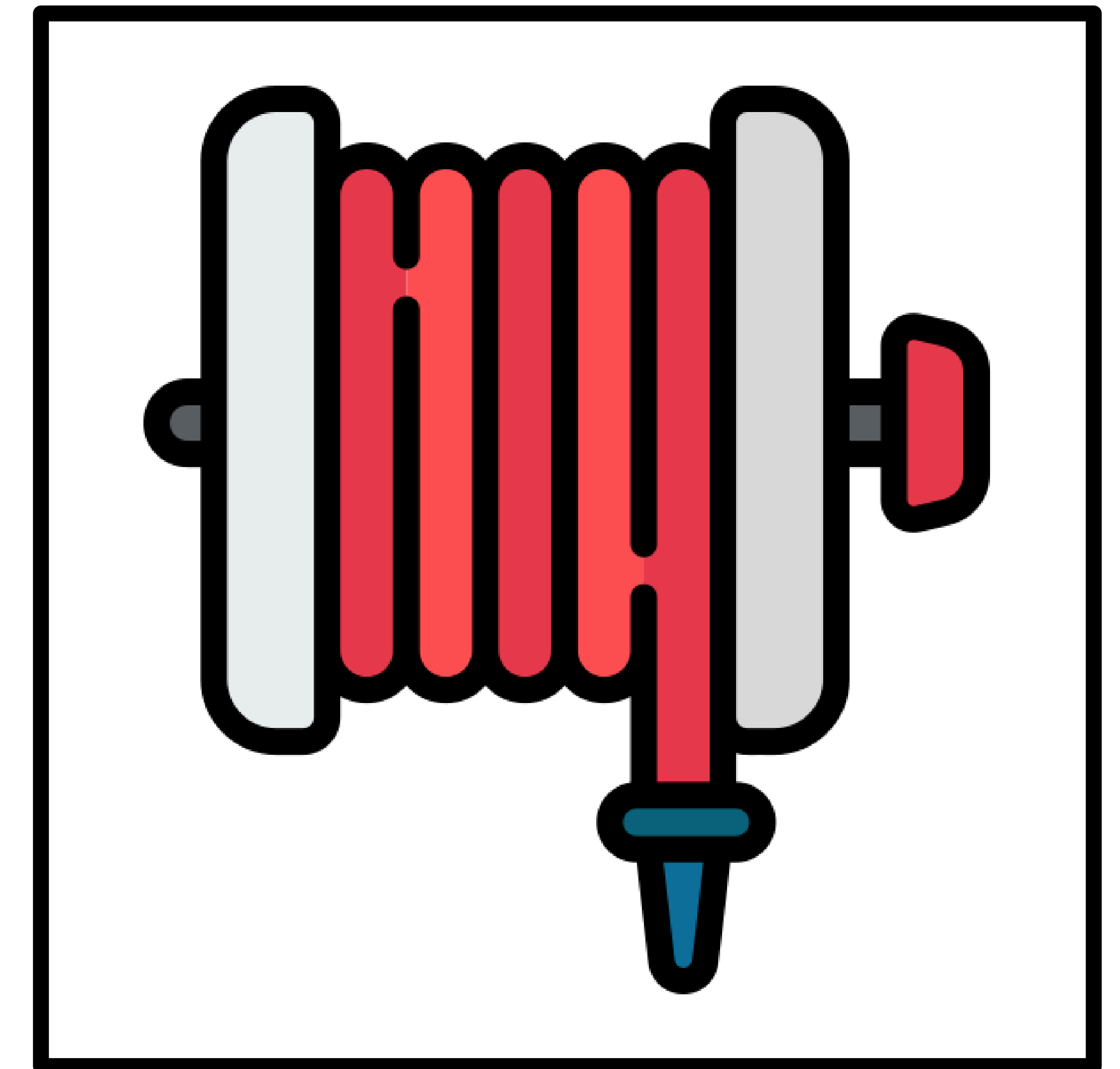
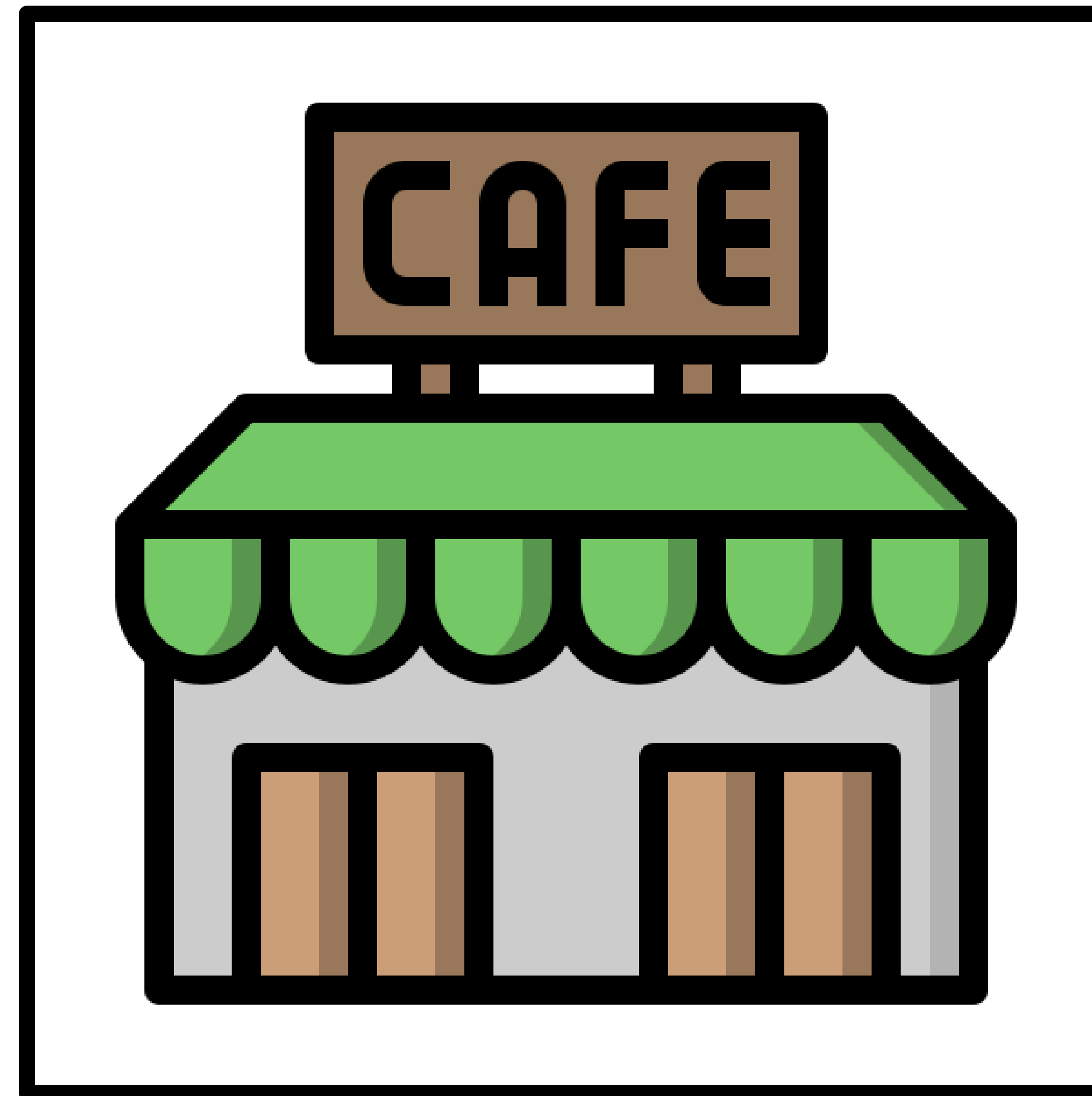
Why do you see a chef?



Which is a chef?



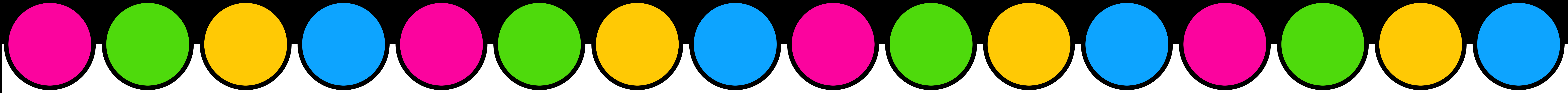
Which item doesn't belong?



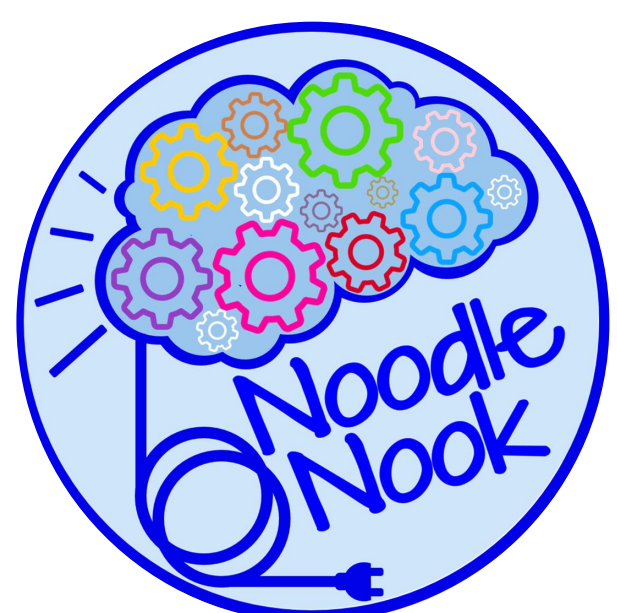
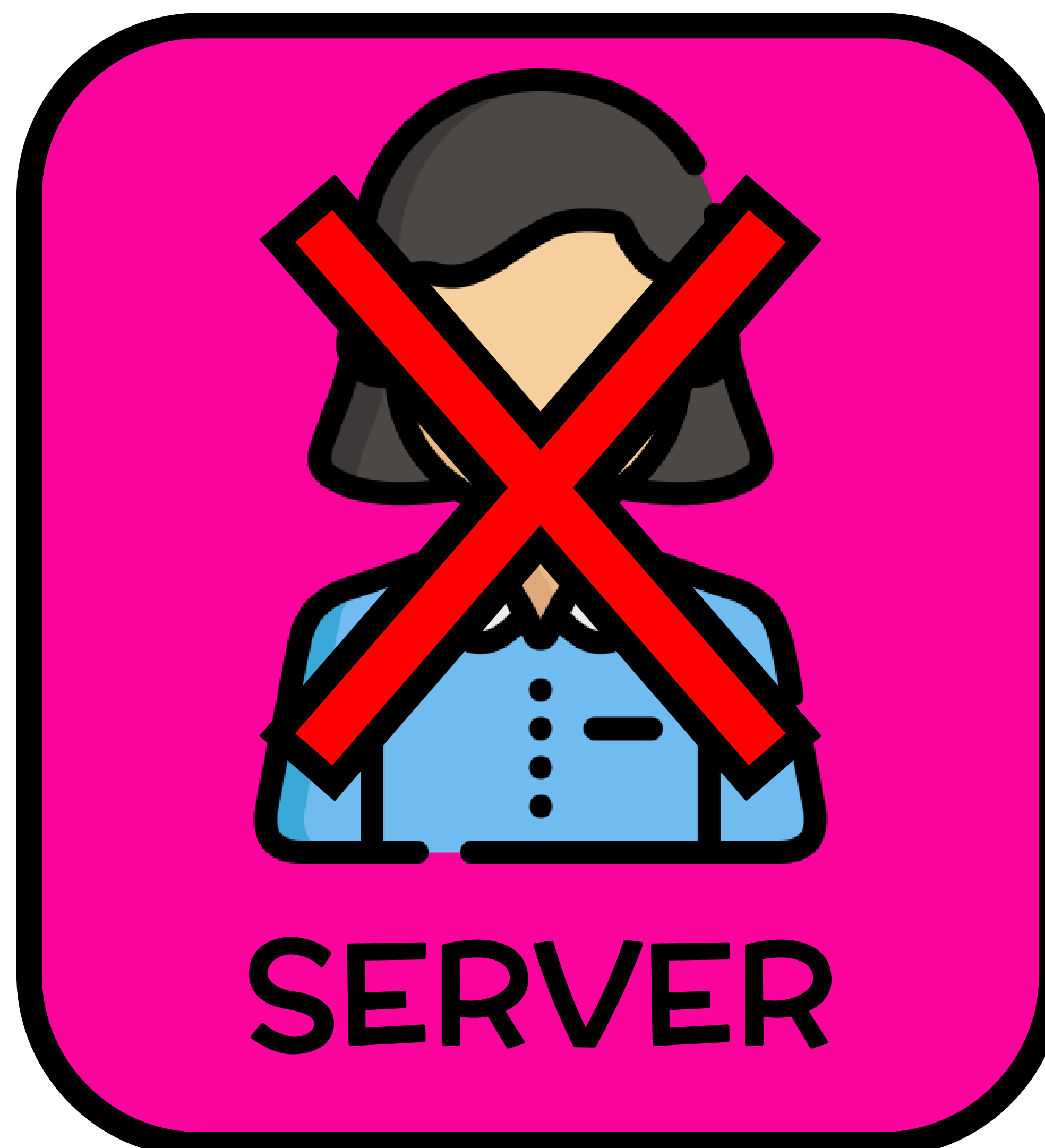
GREAT JOB!



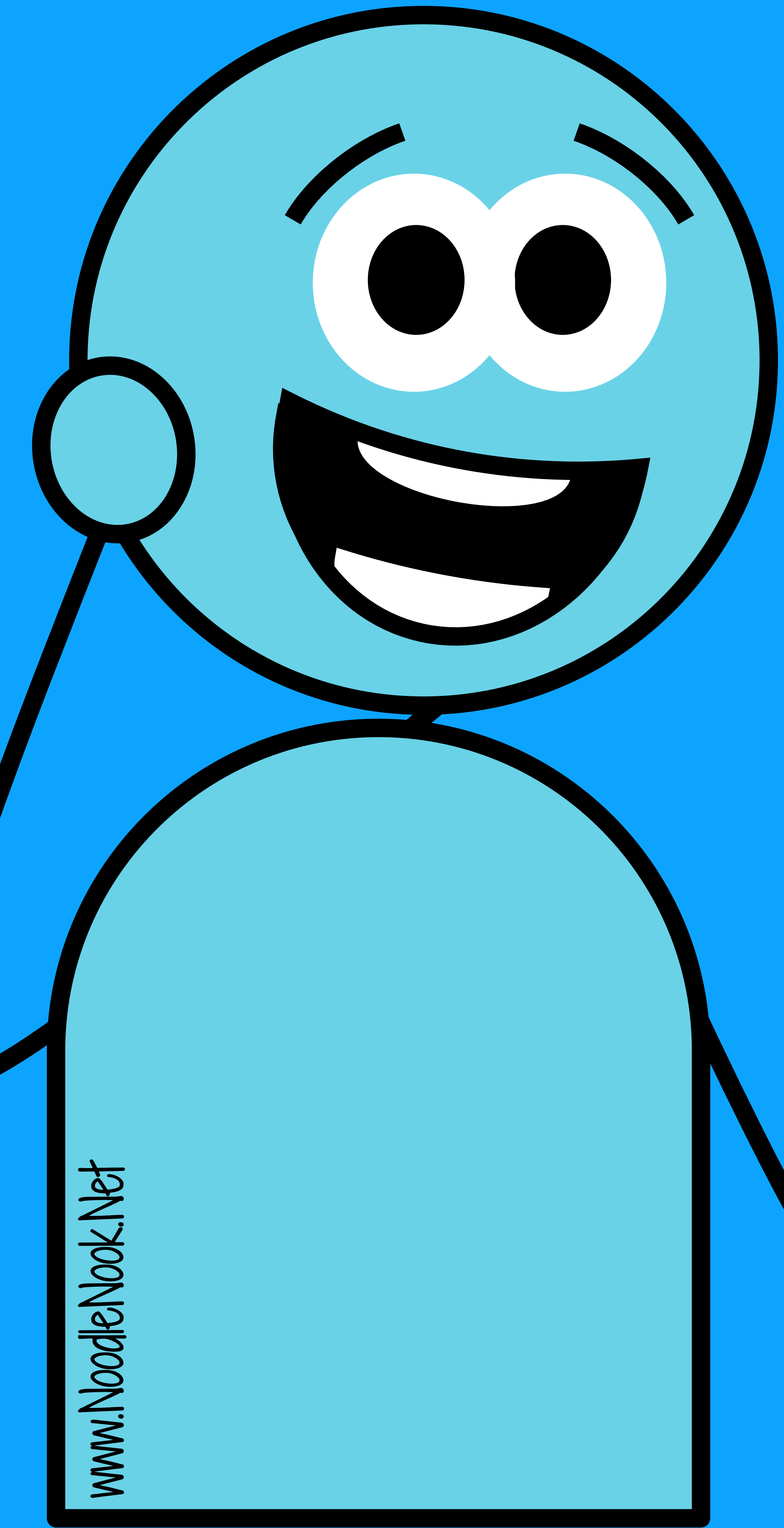
PRACTICE AGAIN




All Occupations Available in the Full Version



DIGITAL & INTERACTIVE PDF OCCUPATIONS FREEBIE



Where is the 





www.NoodleNook.Net

ADAPTED TASKS for SPED
No Print-No Prep = ALL DIGITAL